

Press Release

RÉVÉLATIONS SECRÈTES UNVEILING SECRETS

Amnaj Wachirasut - Soichiro Shimizu

Friday June 1st to Saturday June 15th, 2024.

Daily from 12am to 7pm and on appointment (closed on Mondays).

Press and Collectors Preview with Soichiro Shimizu :

Friday May 31st from 5 to 9pm.

Opening reception with Soichiro Shimizu :

Saturday June 1st from 6 to 9pm.

galerie arnaud Lebecq

20, rue des Gravilliers - 75003 Paris.

Metro : Arts et Métiers - Châtelet.



Révélations Secrètes - Unveiling Secrets : Soichiro Shimizu and Amnaj Wachirasut unveil hidden truths

As it celebrates its fifth anniversary, galerie arnaud Lebecq is proud to present "Révélations Secrètes" - "Unveiling Secrets" - an exhibition featuring Amnaj Wachirasut and Soichiro Shimizu. These two artists from the Thai art scene, that we discovered early 2024, explore universal themes with singular sensibility and intensity.

Amnaj Wachirasut: Capturing his neighborhood changing landscape

Amnaj Wachirasut captures the intimate disruption caused by the construction of a sky train in his district. The semi-abstract landscapes he creates represent a visual narrative of the profound transformations reshaping his environment.

But Wachirasut transcends simple visual representation to immerse himself in the emotional depths of an individual struggling with the evolution of his familiar neighbourhood.

The use of carefully selected colors plays a central role in conveying the complexity of his emotions, blending vibrant shades with muted tones creating a sensation of both beauty and inner tension.

Blurred outlines suggest a sense of confusion and uncertainty, reflecting the artist emotional turmoil. The mirrors and distortions effects associated with the threatening presence of the sky train act as visual metaphors of the fragmentation of the artist once-familiar world.

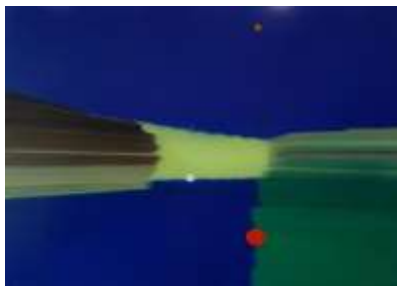
Soichiro Shimizu: Mastering the impermanent and reconnecting with deep nature

Soichiro Shimizu explores the captivating interaction between opposite forces: the creation and decomposition of nature and humanity. His paintings, shaped with duality and impermanence, invite us to consider the meaning of cyclicity and the transitory nature of existence.

Shimizu builds up layers of multiple colors with high-energy movements, emphasizing his impact on materials. These layers are then "deconstructed" by sanding process. The strata, at first invisible, are then unveiled. This process reveals the traces of his past creative activities, like remnants of a memory in constant transformation.

The artist invites us to contemplate the very essence that existed before the layers were constructed, suggesting a deeper truth hidden beneath the surface. What is revealed is what has always been there.

Révélations Secrètes - Unveiling Secrets is an invitation to explore the impermanence of existence, the complexity of human emotions and the fragile beauty of transformation.



Amnaj Wachirasut,
Park in Mind #1, 2024, Oil on
Canvas, 80 x 100 cm.
Courtesy galerie arnaud
Lebecq



Soichiro Shimizu,
Twilight #1, 2024,
Acrylic on Canvas,
91 X 61 cm
Courtesy galerie arnaud
Lebecq

AMNAJ WACHIRASUT



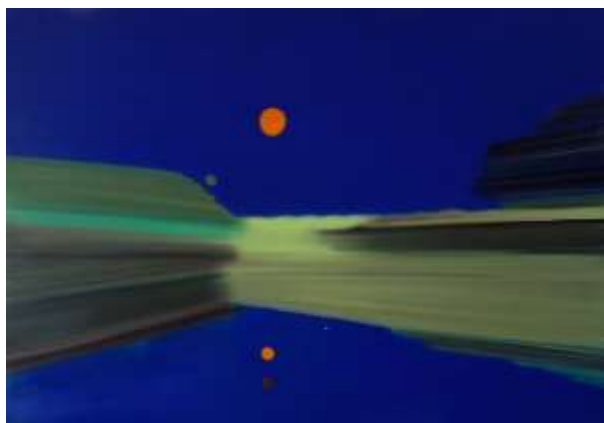
@amnaj.vashirasut
[https://www.instagram.com/
amnaj.vashirasut/](https://www.instagram.com/amnaj.vashirasut/)

Amnaj Wachirasut was born in 1970. He lives and works in Nonthaburi, Thailand.

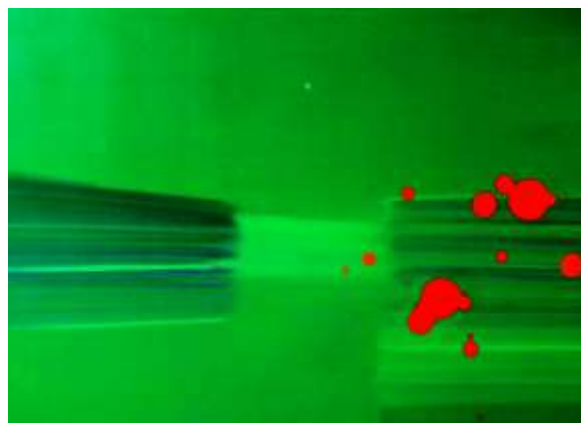
Wachirasut is an artist who believes that painting is a simple question of mind. He works with colors in a semi-abstract way, but creates a structure that reflects light when viewed from different angles. His work represents a world beyond reality, a link between the conscious and the subconscious. His paintings are about life and its environment, revealing the complexity of human perception and emotion.

Wachirasut holds a B.A. and an M.A. in painting from Bangkok University of Fine Arts. He has received numerous awards, including the Petroleum Authority of Thailand Contemporary Art Competition (1997) and the Thailand Art Award from Philip Morris (1996). Wachirasut has participated in solo and group exhibitions, including Chroma, 333Anywhere, Bangkok (2023), Phassa, One wall art Foundation, Bangkok (2022), Disappear, Tootyung Art Center, Chiang Mai (2019), Whisperer, Gallery Seescape, Chiang Mai (2018), Glories of Greyscale, Tadu Contemporary Art, Bangkok (2018), PohChand 31st Century Museum, Bangkok (2018), HOF Art Now Grand Opening, HOF Art Space, Bangkok (2014), Preconceived Nomad, Artery Gallery, Bangkok (2011), Imagery Region, Artery Gallery, Bangkok (2010), ASEAN Art Award, Metropolitan Museum, Manila (1997).

AMNAJ WACHIRASUT



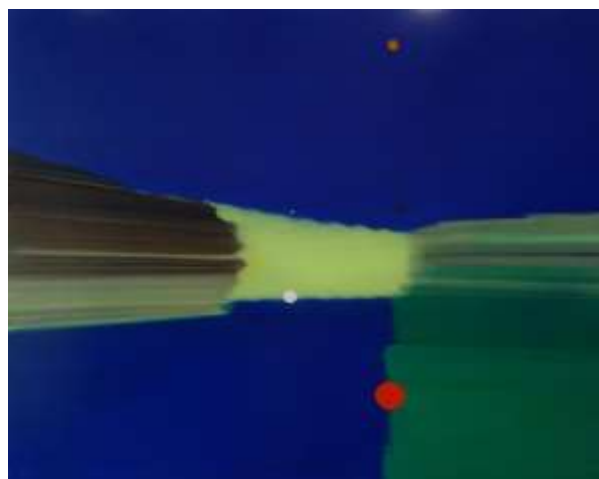
Amnaj Wachirasut, *The Park in my Mind #2*, 2024, Oil on Canvas, 70 X 100 cm
Courtesy galerie arnaud Lebecq



Amnaj Wachirasut, *Ripples in the Pond #1*, 2024, Oil on Canvas, 70 X 100 cm
Courtesy galerie arnaud Lebecq



Amnaj Wachirasut, *Twilight #1*, 2024, Oil on Canvas, 80 X 90 cm
Courtesy galerie arnaud Lebecq



Amnaj Wachirasut, *The Park in my Mind #1*, 2024, Oil on Canvas, 80 x 100 cm
Courtesy galerie arnaud Lebecq

SOICHIRO SHIMIZU



@soichiroshimizu
<https://www.instagram.com/soichiroshimizu/>

Born in Tokyo in 1966, Soichiro Shimizu studied and worked in New York before moving to London and then Bangkok. His paintings and engravings explore the duality of opposite aesthetic forces noted to the existence and deterioration of man and nature.

Working in this style since 1995, Shimizu builds up layers through a physical rhythm of amplified motions, emphasising his condition to affect the current nature of the materials, but at the same time destroying the many layers created. Aligning the residue of his past condition with his current self to uncover what's beneath, the outcome of what is left is the result of what once existed, revealing what was always there to begin with

Shimizu's works have been selected for numerous private and public collections such as collections from Sony Headquarters, Tokyo and Sony Plaza, New York, Shu Uemura Private Collection and MALLAM Contemporary Art Museum in Chiang Mai, Thailand. His work has been exhibited in various galleries worldwide in New York, Paris, Milan, Tokyo, Seoul, and Bangkok. On the occasion of Soichiro Shimizu's solo exhibition at Itochu Gallery, Tokyo in 1999 former director of MoMa Los Angeles, Jeffrey Deitch made note of Shimizu's work:

"The tension created by the confrontation of opposite aesthetic forces is what gives the work its power. In his subtle way, Shimizu is an expert at stoking this aesthetic terrain by fusing opposing approaches to painting into a single work. He draws the viewer into his richly layered artistic world."

SOICHIRO SHIMIZU



Soichiro Shimizu,
Rationaly is not Good Enough
#1, 2022, Acrylic on Canvas,
91 X 61 cm
Courtesy galerie arnaud
Lebecq



Soichiro Shimizu,
Tamatebako, 2022, Acrylic on
Canvas, 91 X 61 cm
Courtesy galerie arnaud
Lebecq



Soichiro Shimizu,
Nothing is Final, 2024, Acrylic, Iron
and Copper on Canvas, 126 X 126 cm
Courtesy galerie arnaud Leb



Soichiro Shimizu,
Dodesukaden #1, 2022, Acrylic on
Canvas, 91 X 61 cm
Courtesy galerie arnaud Lebecq

galerie arnaud Lebecq

Contact :
Arnaud Lebecq
galerie@arnaudlebecq.com
Ph : +33 6 27 74 83 31
www.galeriearnaudlebecq.com

Share your ideas :

